

**Installationsvejledning
Montageanweisung
Installation instruction
Instructions d'installation
Istruzioni di installazione
Installatie- -instructies
Instrucciones de instalación
Asennusohjeet**

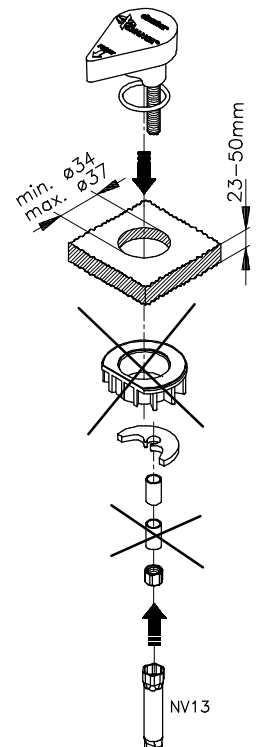
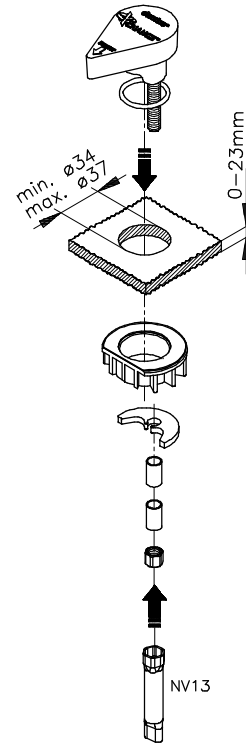
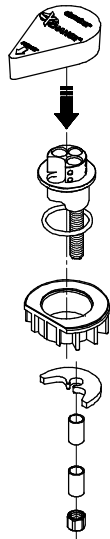
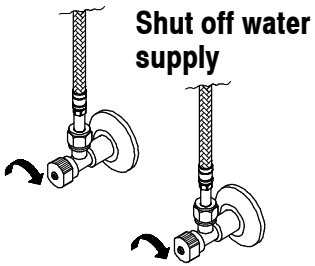
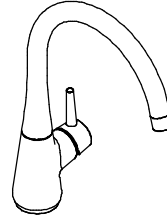
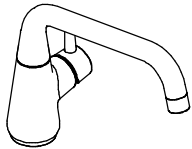
damixa™

Østbirkvej 2, 5240 Odense NØ, Denmark
Tel. +45 63 102 210
E-mail: damixa@fmm-mora.com
Homepage: www.damixa.com

10.16

20172.00

Bell



(a)

(b)

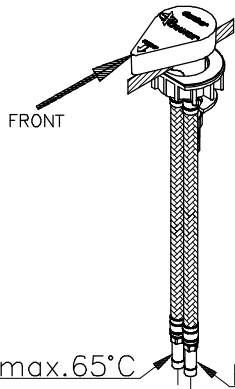
NV13

NV13

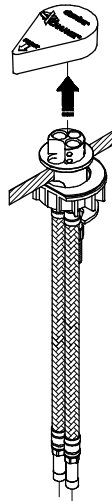
A

B

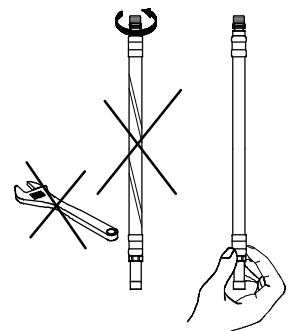
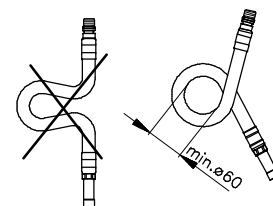
C



A,B: 50-1000 kPa (0.5-10 bar)

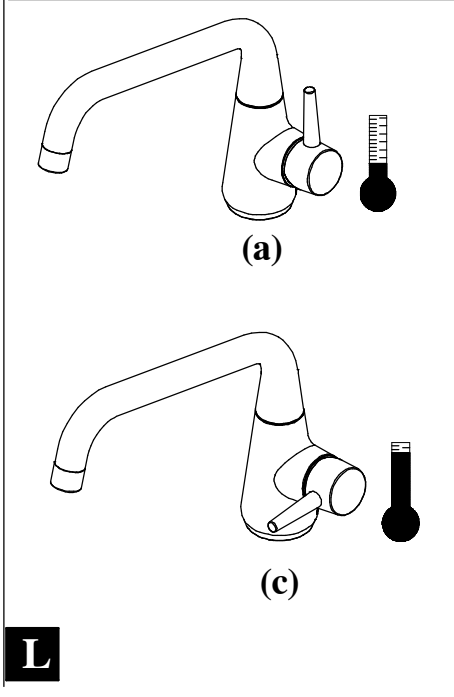
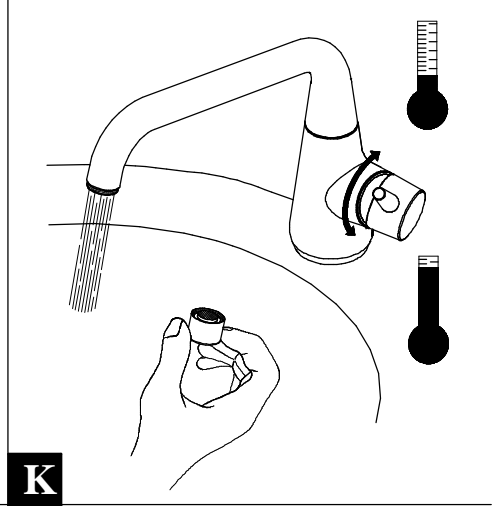
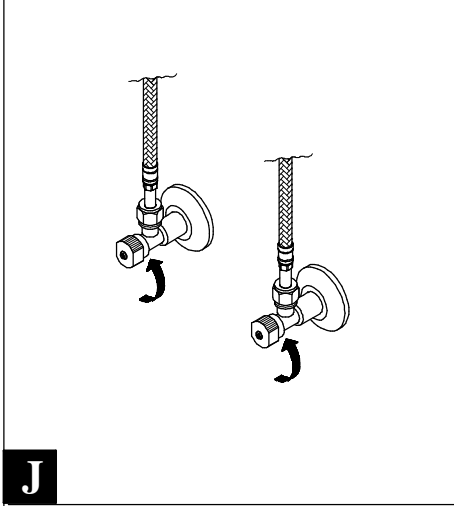
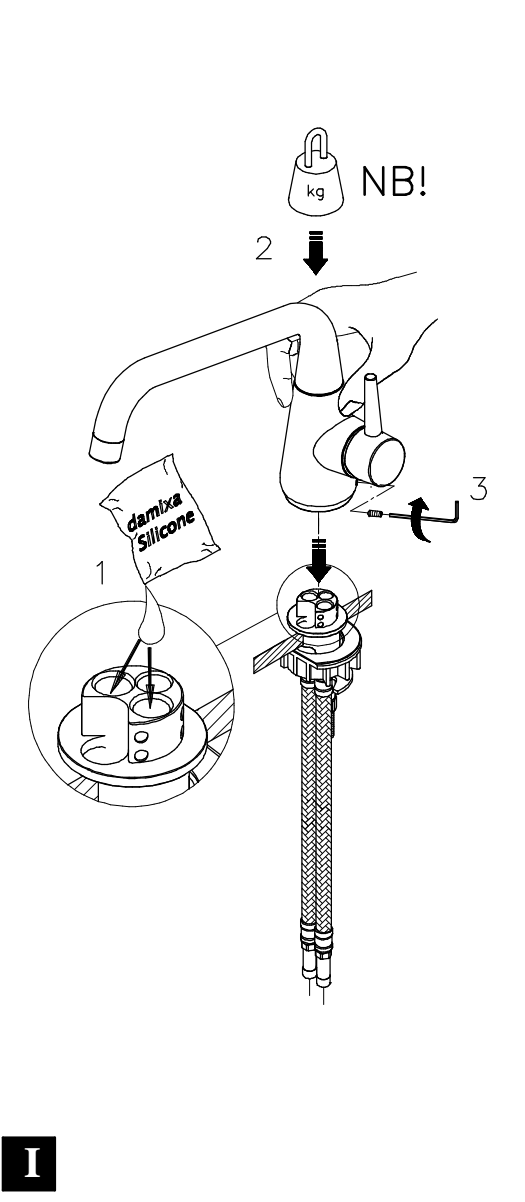
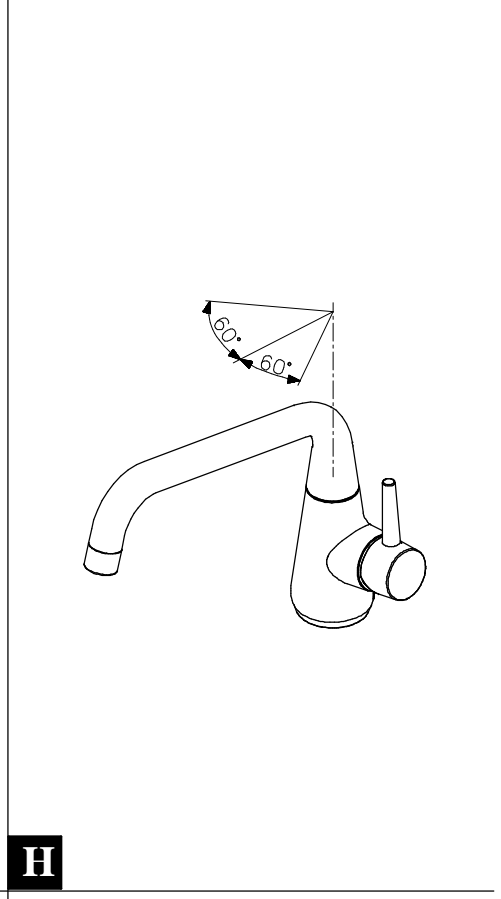
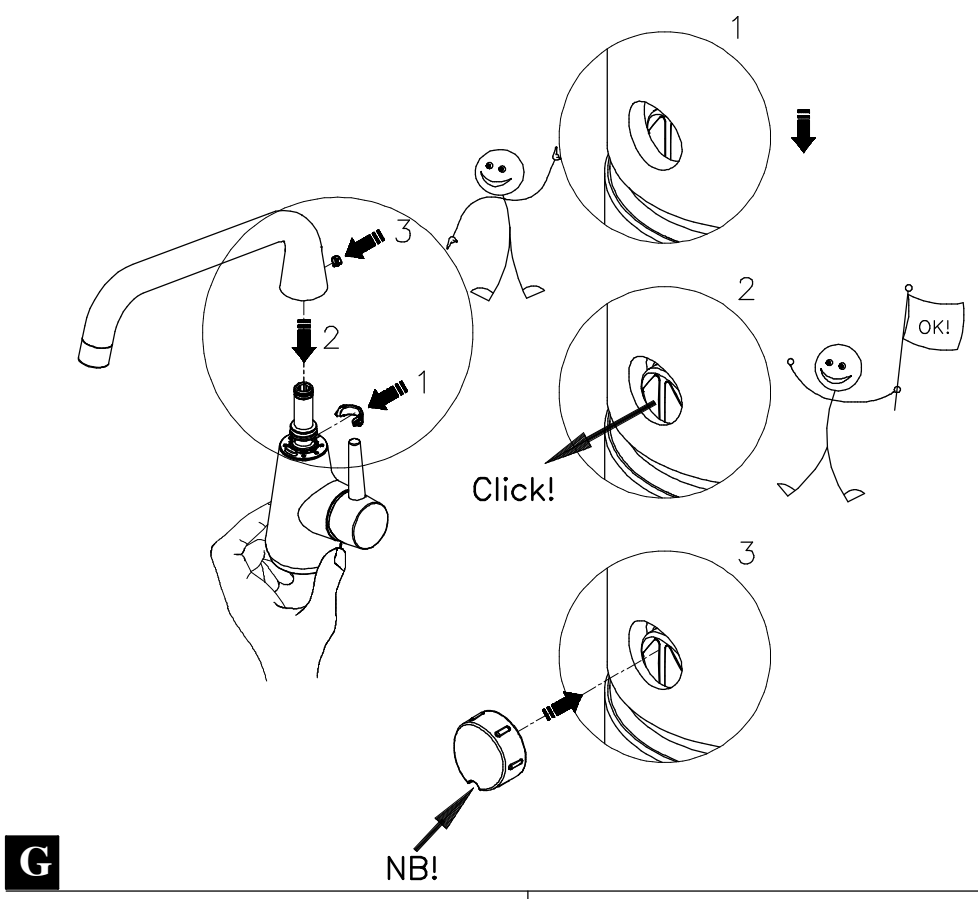


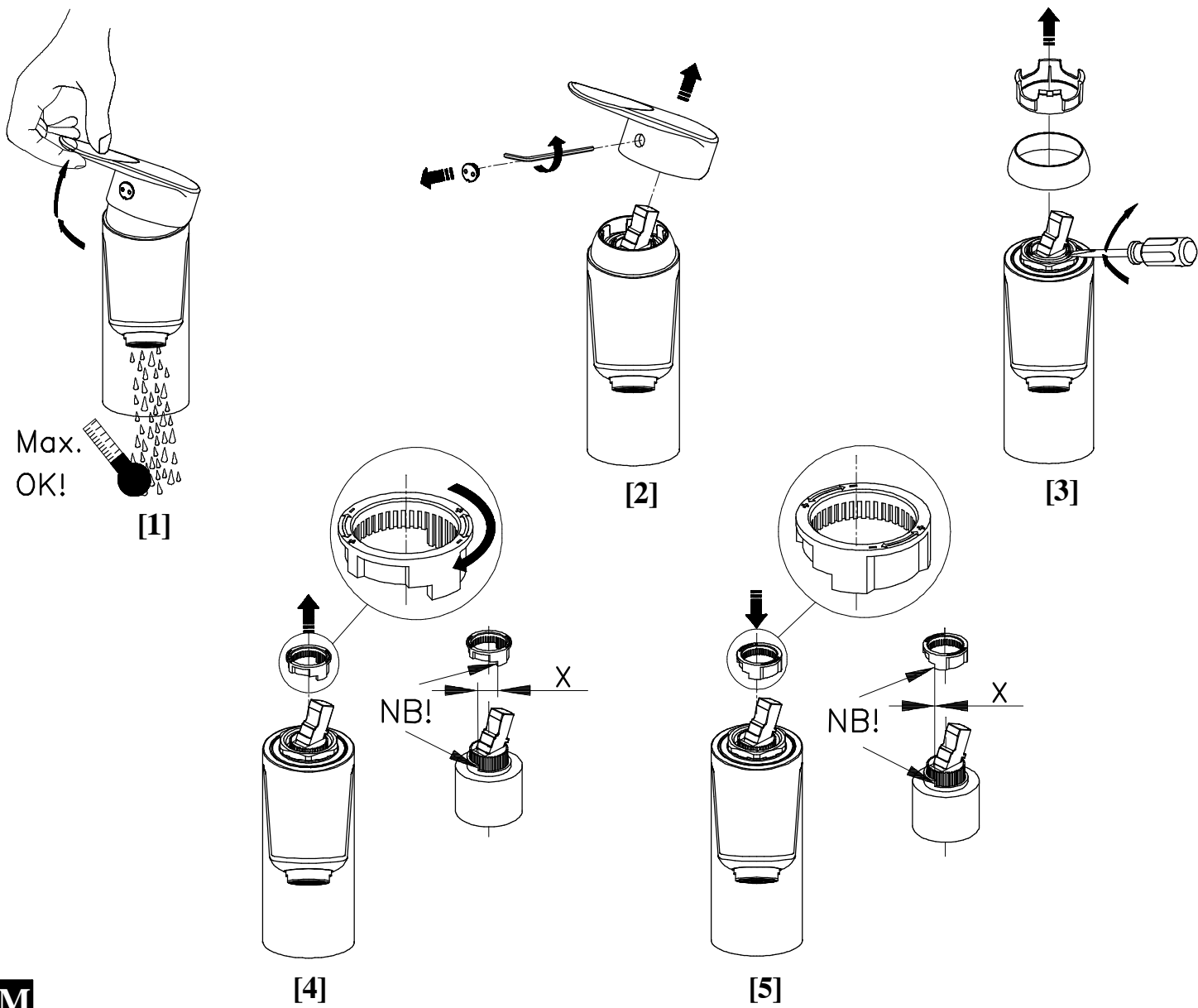
F



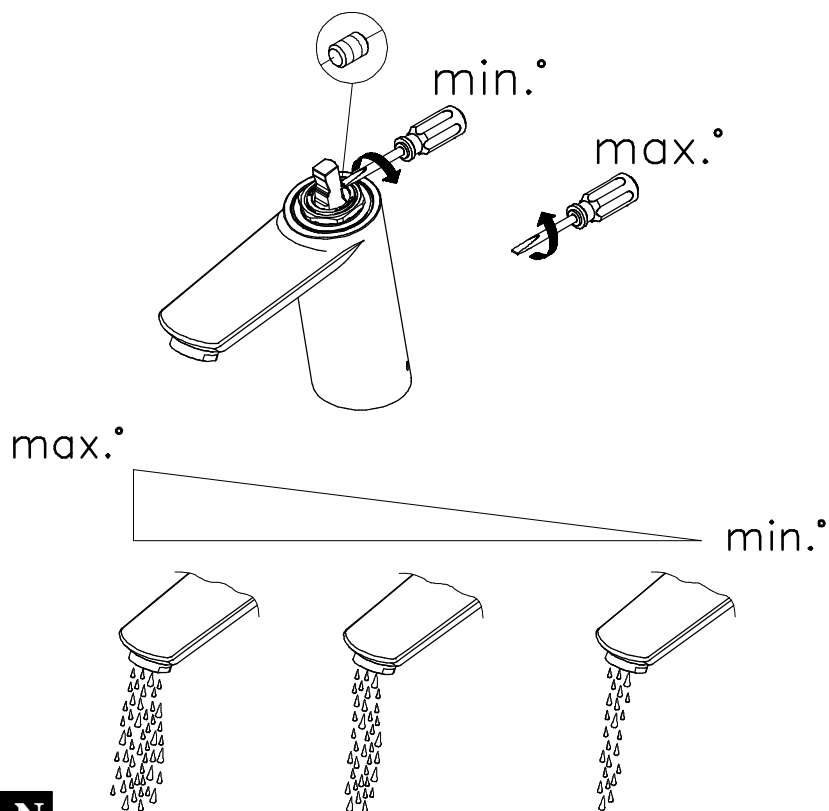
D

E

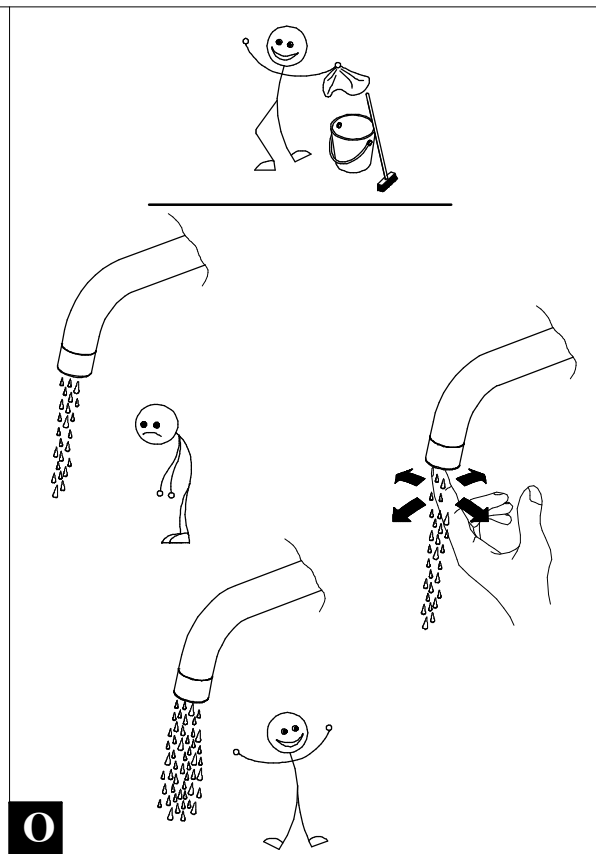




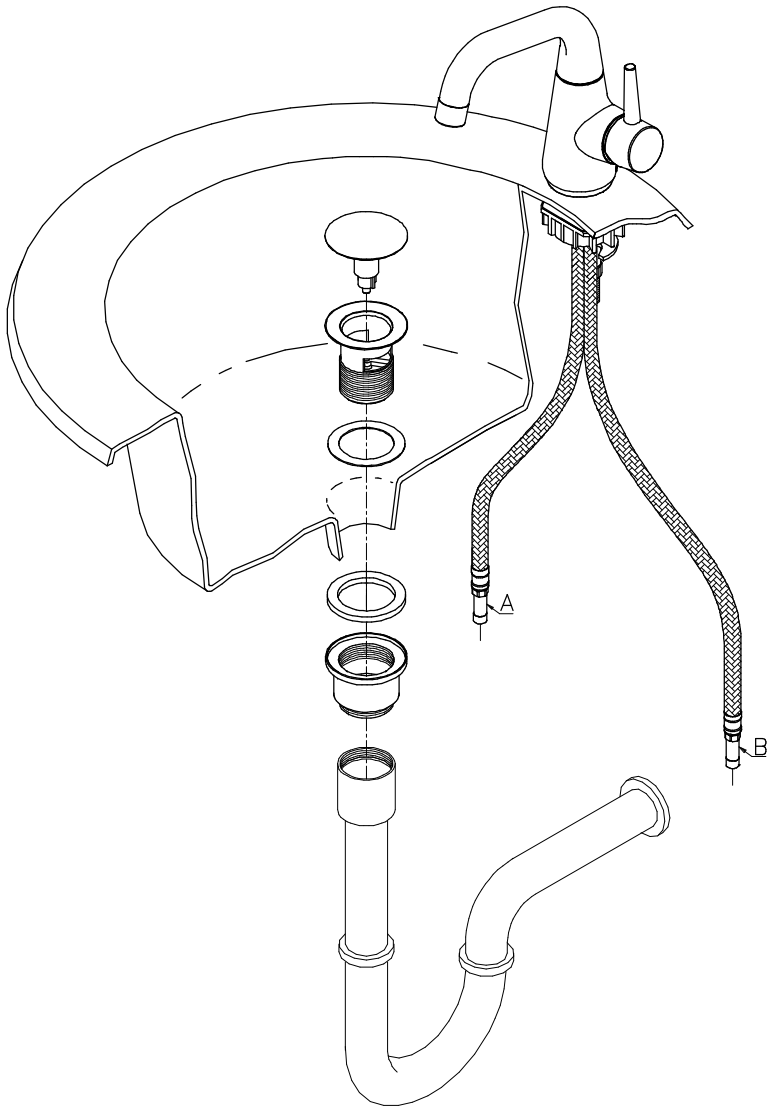
M



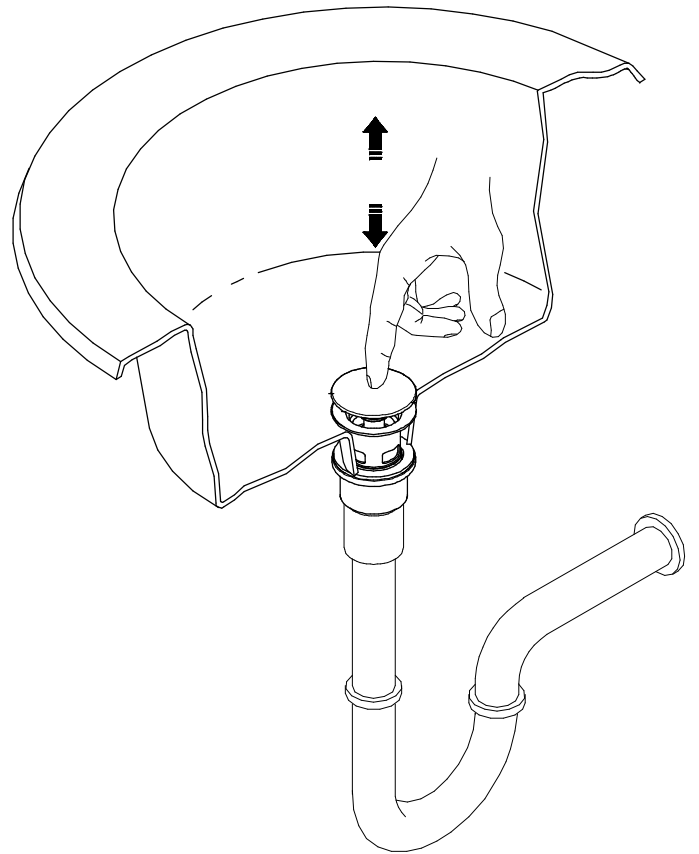
N



O



[1]



[2]